

Middle School Transition

Truman Middle School



Welcome to Truman!

Dr. Mike Straatmann, Principal

Dr. Jenna Wright , Assistant Principal



Middle School Counselors

Mrs. Carolyn O'Daniel, Counselor (7th A-K, 8th)

Mrs. Carrie Pulliam, Counselor (6th, 7th L-Z)





Welcome to Truman!

As your child transitions into middle school, you have a lot to be excited about.

Today, we'll discuss:

- Teams
- Classes and schedules
- Exploratory, intervention, and music classes
- Getting involved at Truman
- FAQs



Core Value Statement

- ▶ **As a Truman FAMILY we value RESPECT, RESPONSIBILITY, and HONESTY in our EDUCATION**



Middle School Teaming

- ▶ Teaming
 - 6 Green
 - 6 Gold
- ▶ Team Courses
 - English Language Arts (ELA)
 - Math (6th or 7th grade curriculum)
 - Science
 - Social Studies
 - Physical Education/Health
 - Daily
 - LEAP Alternates with PE

Team 6 Green

Mrs. Stanton
Social Studies
Ms. Solomon
English
Ms. Deery
Math
Mr. Althage
Science



Team 6 Gold

Mr. Hazelton

Social Studies

Ms. Kohl

English

Mrs. Uhrhan

Science

Ms. Frank

Math





Exploratory and Music

▶ Exploratory Classes

- Practical Arts
 - Family & Consumer Science
 - Technology Education
 - Digital Literacy
 - Keyboarding
- Fine Arts
 - Drama
 - General Music
 - Art
- World Cultures

▶ Daily Music – Band, Orchestra, Choir

Digital Literacy & Keyboarding



- ▶ Software
- ▶ Design, Create, Edit
- ▶ Digital Citizenship
- ▶ Online Research
- ▶ Evaluation of Websites



Technology Education



Family and Consumer Science



Speech & Drama, Art



Band, Orchestra, Choir



Sample Schedules

(Each class is 49 minutes in length)

1. Math
2. Social Studies
- 3A. Exploratory**
- 3B. Exploratory**
- 25 Minute Lunch
4. English Language Arts
5. Science
6. PE
- 7A. Exploratory**
- 7B. World Cultures**

1. Math
2. Social Studies
- 3A. Exploratory**
- 3B. Exploratory**
- 25 Minute Lunch
4. English Language Arts
5. Science
6. PE
- 7. Band**



Middle School Interventions

- ▶ Math Lab
- ▶ Reading Strategies
- ▶ Writing Lab (push in supports)
- ▶ Academic Lab (placement during the year)

Flyertime – As a Truman family, we value respect, responsibility and honesty in our education.

- ▶ Multi-age Class for 23 minutes per day
- ▶ Monday-Friday
- ▶ Character Education
 - Relationships
 - Core Values
 - Service Learning
- ▶ Literacy





Clubs and Activities

(These can change year to year)

- Builders' Club
- Drumline, Fiddlers, Jazz Band, Show Choir, Orchestra Assistants
- Robotics
- T.R.E.N.D
- Inter-District Sports
- Environmental Club
- Intramurals
- Interact
- Stem Squad
- Dance Team
- Cheerleading
- Student Council
- Yearbook



A word from our students on surviving MS





Normal Sixth Grade Concerns

- **Lockers**-You will practice with your teachers
- **Tardies**-classes are all in close proximity
- **Lunch**-you go as a class/team and eat together
- **Class Changes**-you will review schedules before leaving each class
- **Dressing Out**-everyone dresses out and you will get used to it



Typical Parental Concerns

- ▶ **Many Teachers** – open communication: email, phone calls
- ▶ **No Recess** – time at lunch, movement between classes, daily PE, multiple clubs and activities
- ▶ **No Parental Involvement** – A myth
- ▶ **Peer Pressure** – adult support and ongoing communication with your child
- ▶ **Homework** - yes, students will have but it is meaningful practice for students



Additional Parent Concerns

- ▶ **Cliques** – opportunity to meet new friends
- ▶ **Big school** – teams make a larger school seem small
- ▶ **Changes in Child** – physical and biological transitions
- ▶ **Organization** – agenda books; technology resources: teacher websites, Remind 101
- ▶ **Safety** – Cameras, Drills, Staff Development
- ▶ **Technology**.....



Resources at Truman MS

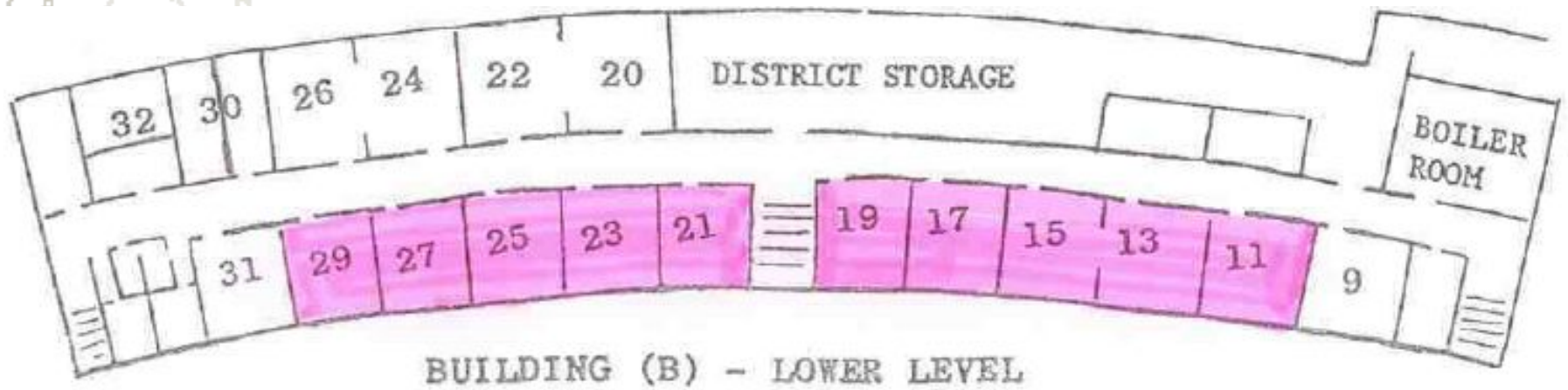
- ▶ Principal - Dr. Straatmann
- ▶ Assistant Principal – Dr. Jenna Wright
- ▶ Counselors – Mrs. Pulliam & Mrs. O’Daniel
- ▶ Social Worker – Mrs. Michelle Studer
- ▶ School Resource Officer - Officer Jeff Kriska
- ▶ Team and Exploratory Teachers
- ▶ Any Adult in the School!



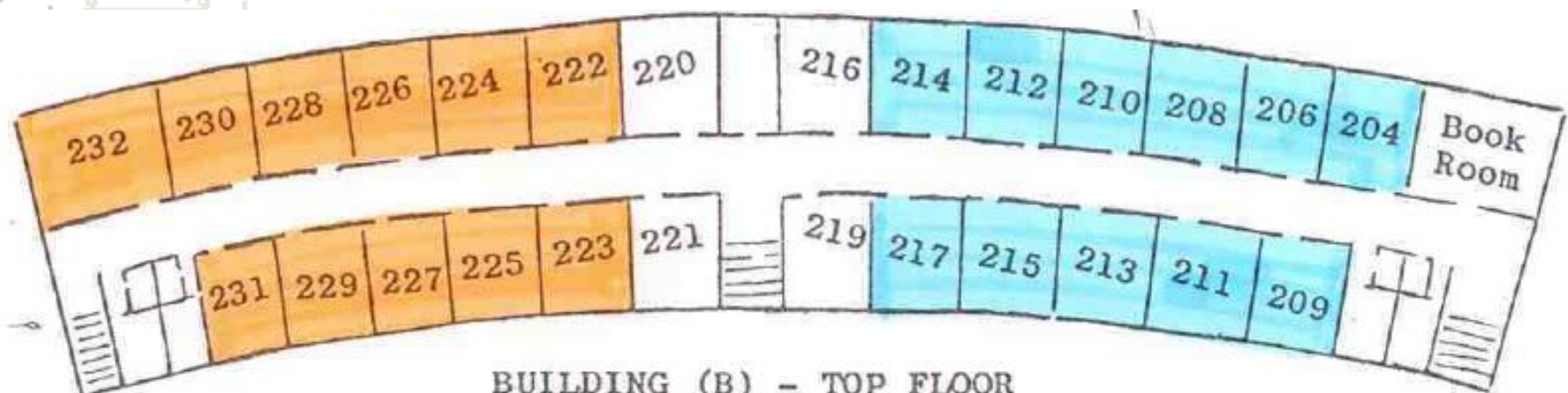
Important Dates for Transition

- **April 29th**
 - 5th Grade Parent Orientation at Truman
- **May 3rd**
 - All 5th grade students visit Truman for Fly Up Day
- **August 9th**
 - Transition Day at Truman
- **August 15th**
 - First Day of Middle School!

6th Grade Floor-Lower Level

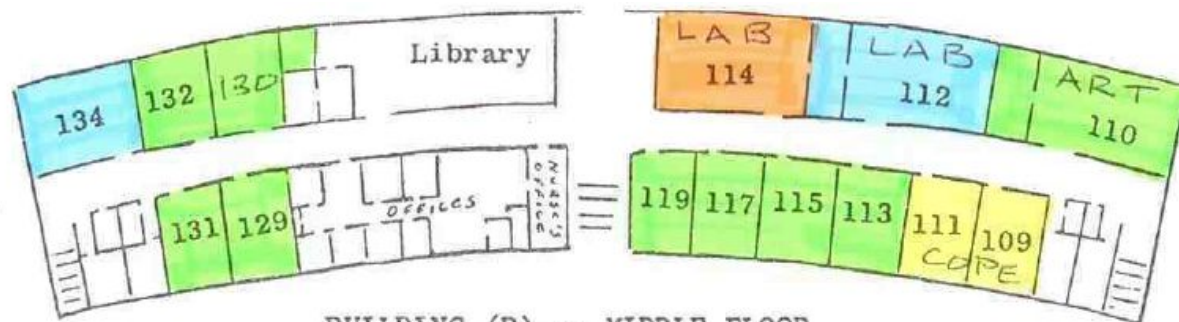
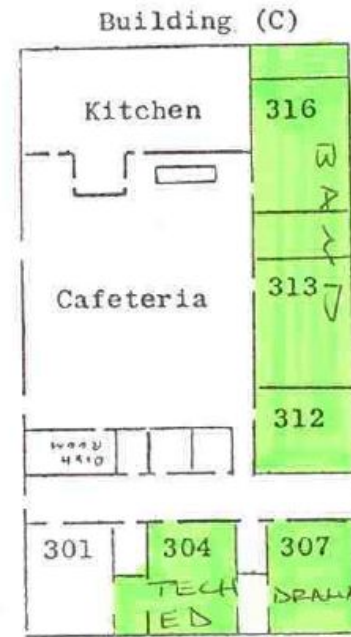
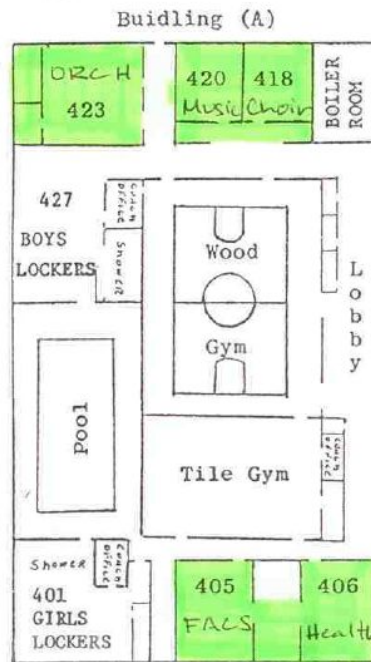


7th & 8th Grade Floor-Top Level



BUILDING (B) - TOP FLOOR

Exploratory-Main Level



BUILDING (B) -- MIDDLE FLOOR



Questions???

Building Tour

